

# International Foundation Group (IFG)

Your pathway to a brighter future  
2024 - 25



## Contents

About International Foundation Group	04
Welcome to IFG	05
The IFG Advantage	06
IFG London & Abu Dhabi	08
Our Courses	12
IFG Virtual Classroom	13
IFG University Foundation Programmes	14
Your Pathway to University and Beyond	16
Our University Partners	22
IFG Medical Foundation Programme	24
IFG Pre-masters & Postgraduate Diploma Programmes	26
Other IFG Pathway Programmes	32
English Language Preparation	34
Your Accommodation	36
Togetherall Student Support	38
What Our Students Say	39
IFG Franchise Network	40

## About International Foundation Group (IFG)

As an international pre-university pathway provider, IFG is your first step towards university in an English-speaking country and towards your future career.

- London & Abu Dhabi campuses
- Online study available in our Virtual Classroom
- Worldwide network of partner teaching centres
- Pathways to universities in the UK, Australia & Europe

Our UK campus in London offers a superb location in the heart of the city close to all the famous shops, museums, parks, theatres, and cinemas. Our UAE campus in Abu Dhabi is in a brand-new building in an area well known for coffee bars and restaurants and offers free parking for students.

IFG also has a network of partner teaching centres worldwide who deliver a selection of our pathway programmes to students studying in their own country. You can currently study IFG programmes in Turkey, Nigeria, Ghana, Iraq, Georgia, Azerbaijan, Egypt, Jordan, South Korea and Mongolia.

## IFG Programmes

Our programmes are recognised and accepted by a wide range of universities ensuring you have the best possible pathway to degree level education.

- University Foundation Programmes leading to undergraduate (bachelor) study
- Pre-masters & Pre-PhD
- Diploma Courses
- English Language Courses

## Welcome to IFG

At IFG our mission is to help students fulfil their academic dreams by providing pathways to UK and Australian university study and beyond. All our staff are dedicated to offering our students the support, choice, and quality they require during their journey towards study at either undergraduate, masters or PhD level.

We are especially proud of the one-to-one support that we give our students when choosing where and what they want to study after completing their IFG pathway programme. This is one of the most important decisions that you will make in your life and so it is especially important to us that we give you all the support they need to make the right choice.

Since 2016 IFG has continued to grow and now in addition to our London and Abu Dhabi campuses we also have a worldwide network of partners teaching IFG Programmes for students who want to study their pathway course in their own country.

So, whether you join us in London, Tbilisi, Baghdad or Abuja we would like to welcome you to IFG and wish you all the best with your studies and future career.

Michael Addison  
IFG Academic Director

Mohamed El Ansari  
IFG Executive Director

## The IFG Advantage

### One-to-One University Application Support

- | Advice on university & course choice
- | Feedback on your personal statement & application

### A Wide Range of Partner Universities

- | IFG partner universities include UK Russell Group members – Birmingham, Leeds, Queen's University Belfast, Liverpool
- | Progression to hundreds of career enhancing degree courses

### English Language Support

- | Built-in Academic English & language skills modules
- | Pre-sessional English available prior to your main courses

### Academic Preparation for University

- | IFG teaching focuses on the skills that you will need at university
- | Academic assessments methods are similar to those you will experience at university



# IFG London & Abu Dhabi

## Our London Campus

Our UK campus in London is based in a magnificent nineteenth century building in a quiet street in the heart of London and only a five-minute walk from Bond Street Underground station. It therefore offers easy access to London's famous shops, museums, parks, theatres and cinemas.

Accommodation is an important part of the international student experience. Therefore, IFG London works with local accommodation providers, who can arrange student residence and homestay accommodation for you prior to arrival.

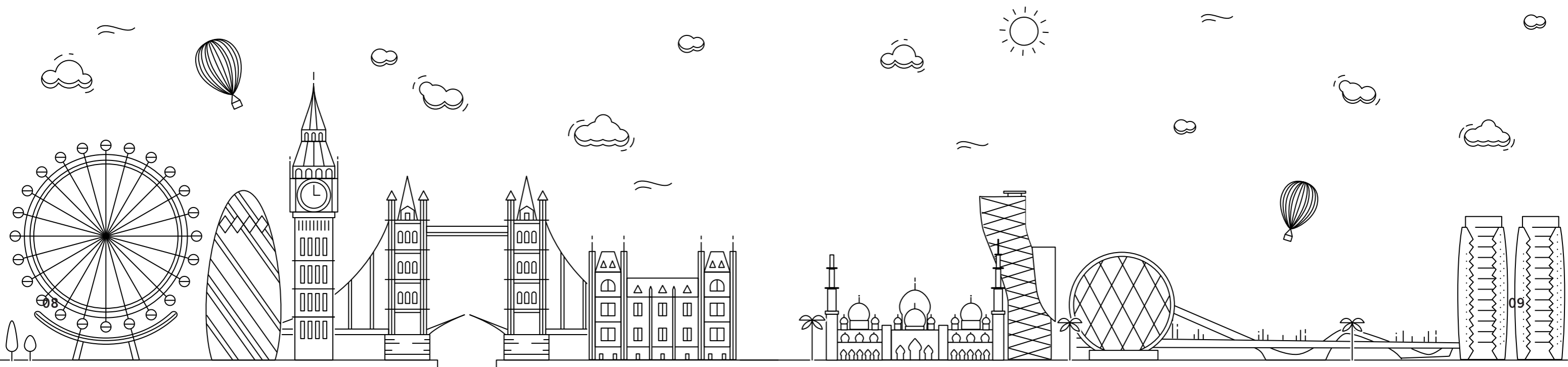
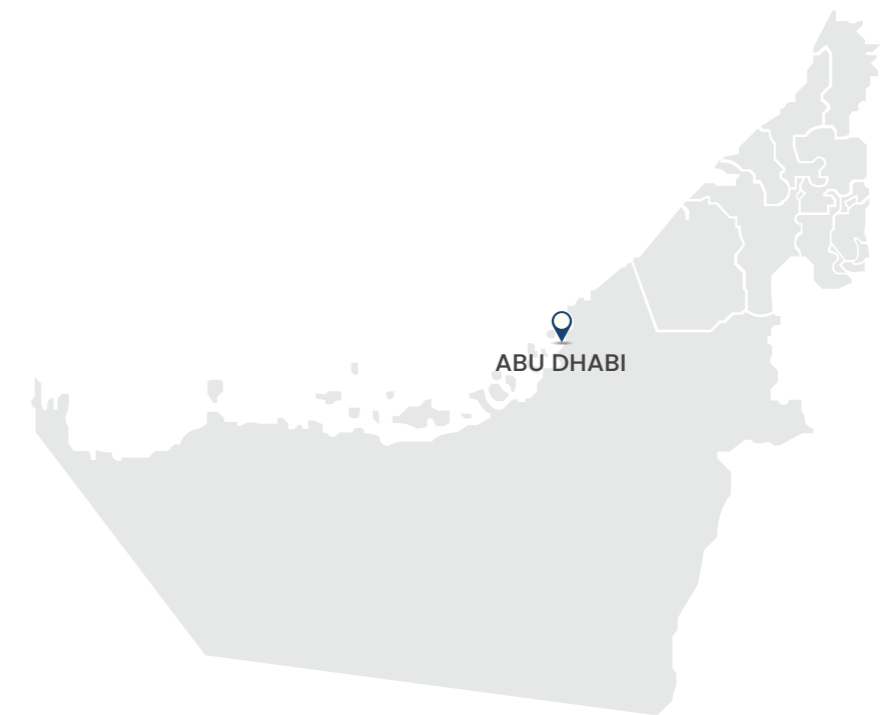
IFG London offers all IFG programmes and studying in London gives you the opportunity to visit our partner universities before deciding where to study.



## Our Abu Dhabi Campus

Our UAE campus in Abu Dhabi is in a brand-new building in an area well known for coffee bars and restaurants and offers free parking for students. The city centre location is very close to the National Theatre, Abu Dhabi Media Centre as well as many international schools and universities.

Our vision is to contribute to the vibrant, exciting and rapidly expanding educational and commercial activities of Abu Dhabi. It is a city of endless opportunities, and we are proud to play our part in its progress. As well as our pathway courses for students wishing to enter UK or Australian university degree courses, we run a wide range of shorter professional courses helping to meet the needs of governmental and private institutions.



## London – Your new home

Ranked 1st in the QS Best Student Cities Guide 2023, London is a truly global, vibrant and multi-cultural city. Home to more than 250 nationalities and 300 languages, London has something for every taste. Everyone has heard of Buckingham Palace and Big Ben but why not try some of our recommendations – we hope you enjoy your stay in London.

### Our top 10 London recommendations

- Get magnificent views from the London Eye or the Shard
- Get an English history lesson at the Tower of London
- See the latest exhibitions at The Tate Modern
- Visit the home of football on the Wembley Stadium Tour
- Take a walk on Hampstead Heath
- Check out the latest fashions at Camden Market
- Eat gourmet food at Borough Market
- Cross the Thames in the IFS Cloud Cable Car
- See a play at William Shakespeare's Globe Theatre
- Try the local cuisine – Fish & Chips, Pie & Mash and of course Curry

### Getting around London

Everyone in London uses the London Underground, called 'The Tube' but there are also buses, trains and even a ferry for getting around. Plus, from London you can catch a train to anywhere in the UK.

### London living costs

The following is an approximate guide of food and other costs in London.

Food for the week	£40 - £60
McDonalds/KFC meal	£7
Can of soft drink	£2
Cinema/Movie	£10 - £15
Coffee	£3.50
1-week London Travel (Zone 1-2)	£28.40*
Mobile Phone (per month)	£20 - £50

\*With an 18+ Student Oyster photocard

## Abu Dhabi – Your new home

Capital of the United Arab Emirates (UAE), Abu Dhabi offers a fascinating combination of modern city life and traditional Arabian culture. Between the skyscrapers and busy streets, you will find over 5,000 years of history, traditional souks and an authentic Bedouin lifestyle. Plus, if you run out of ideas, then Dubai is only a ninety-minute drive away.

### Our top 10 Abu Dhabi recommendations

- Ride the world's fastest rollercoaster at Ferrari World
- Meet your favourite cartoon and movie characters at Warner Bros World
- Spend the weekend sandboarding – like snowboarding but on sand
- Enjoy a camel ride on a desert safari
- Explore traditional way of living at Heritage Village
- Enjoy more than 40 rip-roaring rides at Yas Waterworld
- Explore the dunes and watch the sunset at Fossil Dunes Park
- The famous sites – Presidential Palace, Grand Mosque & Qasr-al-Hosn
- Learn local traditions at the Sheikh Zayed festival (October - March only)
- No stay in Abu Dhabi is complete without a visit to the beach

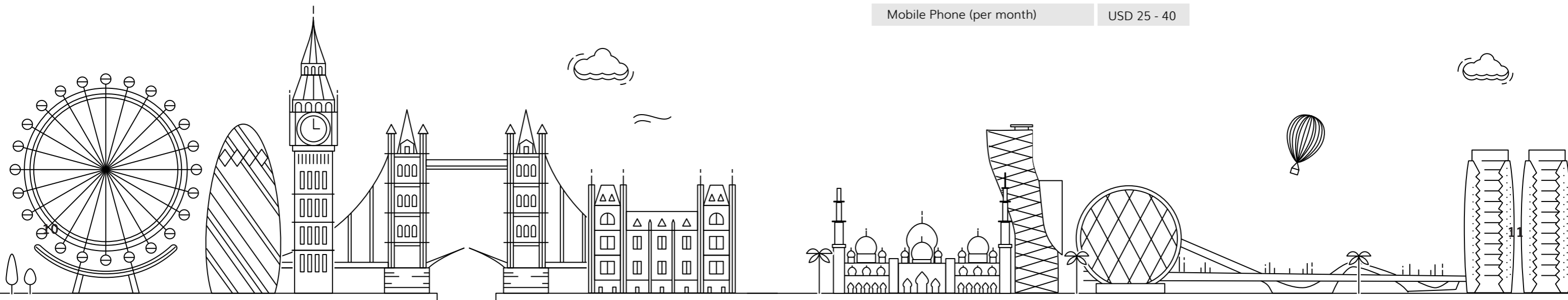
### Getting around Abu Dhabi

Taxis are a safe, regulated and reliable way to get around. Ridesharing apps, including Uber are also available and widely used. Abu Dhabi also has a good network of public buses and of course you can also rent a car or rent a Careem Bike or kick scooter and get around by yourself.

### Abu Dhabi living costs

The following is an approximate guide of food and other costs in Abu Dhabi.

Food for the week	USD 40 – 70
McDonalds/KFC meal	USD 8
Shawarma at a local cafe	USD 5.50
Cinema/Movie	USD 10 – 20
Coffee	USD 5
20-minute taxi ride	USD 10
Bus ticket (inside Abu Dhabi)	USD 0.5
Bus ticket (Abu-Dhabi - Dubai)	USD 7
Mobile Phone (per month)	USD 25 - 40



## Our Courses

### IFG University Foundation Programmes

- Business Management
- Engineering
- Computer Science
- Social Sciences (including Law)
- Medical

### IFG Pre-Masters and Pre-PhD Programmes

- Pre-Masters in Business Management
- Pre-Masters in Law
- Pre-sessional for Postgraduate Studies
- Pre-PhD Preparation
- Pre-DBA Preparation

### Diploma Programmes

- Postgraduate Diploma in Business & Management
- Diploma (Level 4) and Advanced Diploma (Level 5) in Business Management

### English Language Courses

- Pre-sessional English
- General English & One-to-One tuition
- Occupational English Test (OET) Preparation



## IFG Virtual Classroom

We appreciate that studying your IFG programme in London, Abu Dhabi or one of our partner teaching centres may not be convenient for you. This may be due to other commitments or simply because you prefer to study at home and there isn't a partner centres nearby.

We therefore offer students the option of studying online in our Virtual Classroom.

If you choose to study this way, then you will receive full training on how to access your classes as well as ongoing technical support. You will also be able to see and talk to your teachers and classmates, share an interactive whiteboard with them and view presentations and videos shown by your teacher.

The IFG Virtual Classroom therefore is as close as possible to the real classroom experience.



# IFG University Foundation Programmes

## Who Needs an IFG University Foundation

Foundation Programmes are 9-month intensive programmes that are recognised by our partner universities as equivalent to UK A Levels or the International Baccalaureate Diploma (IB) and so meet the entry requirement for direct entry to undergraduate (bachelor) study.

Foundation therefore offers a direct route to university in the UK and Australia for International students who have completed 11 or 12 years of education in their own country.

### An Alternative to A Levels or the IB Diploma

- 9-month course rather than 2-years for A levels or the IB Diploma
- Built-in English language and academic skills modules
- Prepares you for university-style teaching and assessment

### The IFG Foundation Programme Offer

IFG offers five separate Pre-University Foundation Programmes. This ensure that you can study the course that best suits your university course and career aspirations. We offer Foundation Programmes in:

- Business Management
- Engineering
- Computer Science
- Social Sciences (including Law)
- Medical

These programmes ensure that students who successfully complete the course and can demonstrate the required level of English have a direct route to hundreds of undergraduate courses in all relevant disciplines.

### What you will Study

During your Foundation Programme you will develop the language, learning and communication skills that will prepare you university study in the UK & Australia:

- Study Skills
- Communication Skills
- Academic English

You will also study Maths and key academic modules related to your chosen Foundation Programme, such as Economics, Physics, Computer Science or Business Studies. Each Foundation Programme is completed with a project which consolidates your learning and further prepare you for undergraduate study. The structure of the Medical Foundation is different to the other four IFG Foundation Programmes (see page 24)

### The IFG Guarantee

IFG guarantees that students who successfully pass their Foundation Programme with the required level of English will receive offers for undergraduate courses from our university partners.

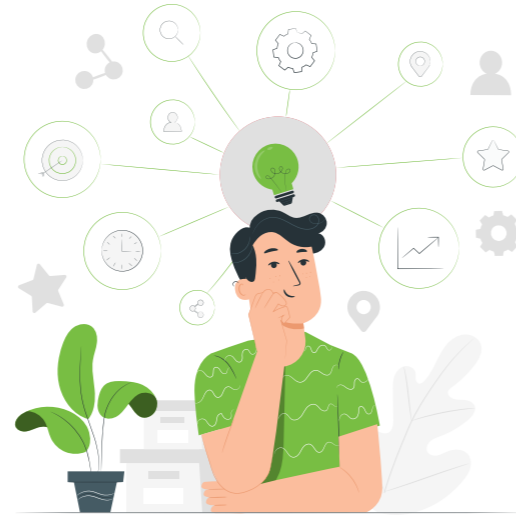


# Your Pathway to University and Beyond

## STEP 1: Do you need to enrol on an IFG Foundation?

Do you want to study at a UK or Australian university after completing high school in your country?

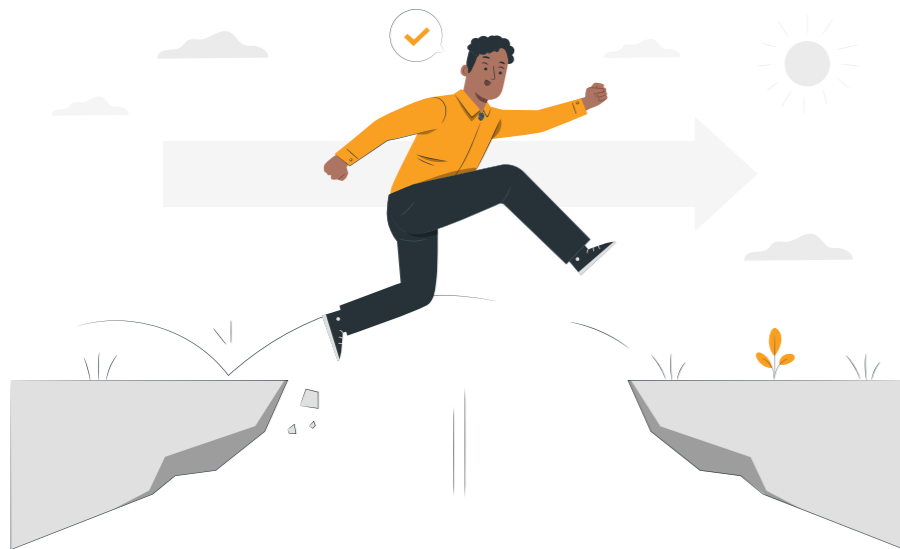
Then you probably need a Foundation Programme and IFG can help - please check with us for entry requirements



## STEP 2: Choose your IFG Foundation and future career path

Foundation options: Business Management, Social Sciences, Computer Science & Medicine

Pathways to hundreds of university undergraduate (bachelor) courses in the UK & Australia and your future career



## STEP 3: Decide where you want to study your IFG Foundation

IFG London or Abu Dhabi

IFG online Virtual Classroom

IFG partner teaching centres worldwide

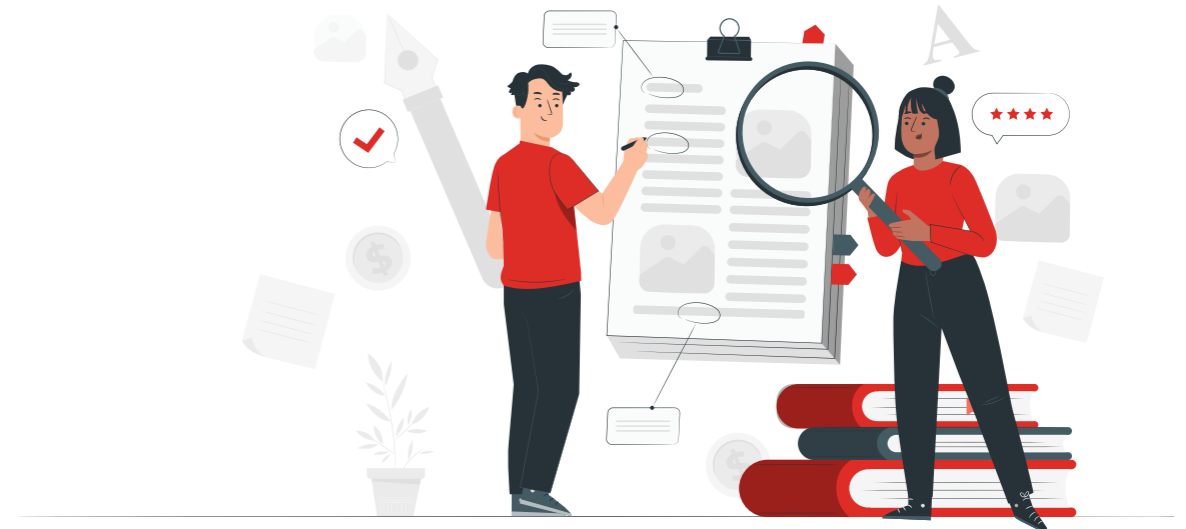
Wherever you study your course, the teaching quality and your pathway to university will be the same



## STEP 4: Complete your IFG Foundation and University application

Completing your Foundation Programme will give you the qualification you need to enter university plus the confidence and skills to succeed

During your course we will guide you through your university application and advise you on your choices



## STEP 5: University and beyond

Congratulations!

You are ready to start university and the next step towards your dream career

International experience and a degree from a UK or Australian university will open a world of exciting career opportunities





## University Foundation in Business Management

### Key Academic Modules

#### Business Studies

An introduction to how different types of businesses operate in a global environment and respond to external factors. You will also learn different business theories and how to apply practical solutions in the real world.

#### Economics

An introduction to key economic concepts, theories and institutions. You will explore current national and international economic issues, the problems they create and the effect on our everyday life.

#### Accounting

An understanding of the basic concepts of financial and managerial accounting is a valuable way of understanding how businesses work. You will use case studies to learn how to apply accounting principles to everyday business situations.

#### Entry Requirements

Completion of High School in your country with good grades or 4 IGCSEs at Grade C (4).

An English level equivalent to 5.0 in IELTS.

Please contact us for country-specific academic entry requirements.

Pre-sessional English courses are available for students who do not have the required English level.

#### Progression to undergraduate study in the following subjects:

- Business Management
- Finance/Banking
- Accounting
- Economics
- Marketing
- Entrepreneurship
- International Business
- Human Resource Management
- Operations Management
- Project Management
- Travel & Tourism
- Hospitality

#### Fees and Start Dates

London: GBP 14,000

Abu Dhabi: USD 13,400

Online: GBP 9,000

Note: Fees are subject to change

Start Dates: September & January

Course Length: One Academic Year

For availability & fees at partner teaching centres please contact us at [info@intfoundationgroup.co.uk](mailto:info@intfoundationgroup.co.uk)

## University Foundation in Social Sciences

### Key Academic Modules

#### Law

An introduction to the English legal system with a strong emphasis on evaluating information and developing the skills to construct logical, coherent and balanced arguments. You will also study contract and criminal law plus explore issues of morality and justice.

#### Economics

An introduction to key economic concepts, theories and institutions. You will explore current national and international economic issues, the problems they create and the effect on our everyday life.

#### Politics

An introduction to the UK political system and processes. You will apply your knowledge to contemporary politics and events plus learn about political institutions and processes in the USA, analysing the similarities and differences between the two systems.

#### Progression to undergraduate study in the following subjects:

- Economics
- History
- Law/Legal Studies
- Politics/International Relations
- Psychology
- Sociology
- Anthropology
- Geography
- Communication Studies
- Media Studies
- Philosophy
- Publishing
- Criminology

#### Entry Requirements

Completion of High School in your country with good grades or 4 IGCSEs at Grade C (4).

An English level equivalent to 5.5 in IELTS.

Please contact us for country-specific academic entry requirements.

Pre-sessional English courses are available for students who do not have the required English level.

#### Fees and Start Dates

London: GBP 14,000

Abu Dhabi: USD 13,400

Online: GBP 9,000

Note: Fees are subject to change

Start Dates: September & January

Course Length: One Academic Year

For availability & fees at partner teaching centres please contact us at [info@intfoundationgroup.co.uk](mailto:info@intfoundationgroup.co.uk)



# University Foundation in Engineering

## Key Academic Modules

### Physics

An introduction to the applications of physics and their importance to different fields of human activity. You will also learn the skills required for designing, carrying out and analysing experiments.

### Further Mathematics & Mechanics

An essential subject for students wishing to progress to degrees in any engineering field.

### Computer Science

You will study a wide range of topics including, Artificial Intelligence (AI), programming, databases, networks, IT security, and web development. The module is practically based with a strong emphasis on applying learning to real life situations.

### Chemistry

An introduction to the fundamentals of physical, organic and inorganic chemistry. You will study atomic structure, chemical bonding and measurement, plus how to write chemical formula and balance chemical equations.

### Progression to undergraduate study in the following subjects:

- Aerospace/aeronautical Engineering
- Civil Engineering
- Electrical/electronic Engineering
- Mechanical Engineering
- Engineering Management
- Physics
- Astrophysics/Astronomy
- Agriculture/Agricultural Science
- Chemical Engineering\*
- Petrochemical Engineering\*

\*Only for students who have studied the Chemistry module

### Entry Requirements

Completion of High School in your country with good grades (including Maths & a Science) or 4 relevant IGCSEs at Grade C (4).

An English level equivalent to 5.0 in IELTS.

Please contact us for country-specific academic entry requirements.

Pre-sessional English courses are available for students who do not have the required English level.

### Fees and Start Dates

London: GBP 14,000

Abu Dhabi: USD 13,400

Online: GBP 9,000

Note: Fees are subject to change

Start Dates: September & January

Course Length: One Academic Year

For availability & fees at partner teaching centres please contact us at [info@intfoundationgroup.co.uk](mailto:info@intfoundationgroup.co.uk)



# University Foundation in Computer Science

## Key Academic Modules

### Physics

An introduction to the applications of physics and their importance to different fields of human activity. You will also learn the skills required for designing, carrying out and analysing experiments.

### Further Mathematics & Mechanics

An essential subject for students wishing to progress to degrees in any engineering field

### Computer Science

You will study a wide range of topics including, Artificial Intelligence (AI), programming, databases, networks, IT security, and web development. The module is practically based with a strong emphasis on applying learning to real life situations.

### Progression to undergraduate study in the following subjects:

- Computer Programming
- Computer Science
- Information Sciences
- Management Information Systems
- Software Engineering
- Systems Analysis
- Cyber Security
- Artificial Intelligence
- Games Design/Gaming
- Maths (dependant on university)

### Entry Requirements

Completion of High School in your country with good grades (including Maths & a Science) or 4 relevant IGCSEs at Grade C (4).

An English level equivalent to 5.0 in IELTS.

Please contact us for country-specific academic entry requirements.

Pre-sessional English courses are available for students who do not have the required English level.

### Fees and Start Dates

London: GBP 14,000

Abu Dhabi: USD 13,400

Online: GBP 9,000

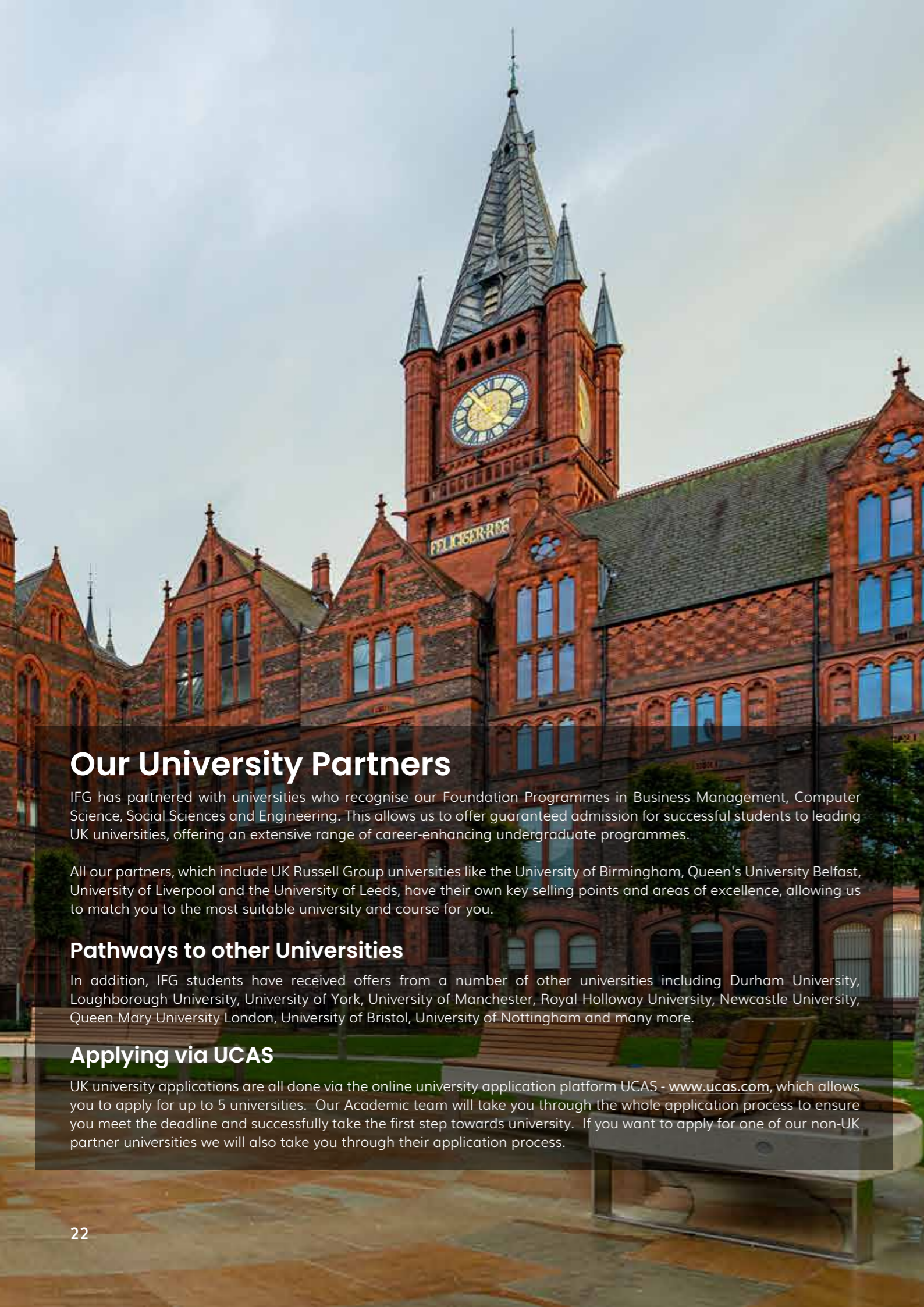
Note: Fees are subject to change

Start Dates: September & January

Course Length: One Academic Year

For availability & fees at partner teaching centres please contact us at [info@intfoundationgroup.co.uk](mailto:info@intfoundationgroup.co.uk)





## Our University Partners

IFG has partnered with universities who recognise our Foundation Programmes in Business Management, Computer Science, Social Sciences and Engineering. This allows us to offer guaranteed admission for successful students to leading UK universities, offering an extensive range of career-enhancing undergraduate programmes.

All our partners, which include UK Russell Group universities like the University of Birmingham, Queen's University Belfast, University of Liverpool and the University of Leeds, have their own key selling points and areas of excellence, allowing us to match you to the most suitable university and course for you.

### Pathways to other Universities

In addition, IFG students have received offers from a number of other universities including Durham University, Loughborough University, University of York, University of Manchester, Royal Holloway University, Newcastle University, Queen Mary University London, University of Bristol, University of Nottingham and many more.

### Applying via UCAS

UK university applications are all done via the online university application platform UCAS - [www.ucas.com](http://www.ucas.com), which allows you to apply for up to 5 universities. Our Academic team will take you through the whole application process to ensure you meet the deadline and successfully take the first step towards university. If you want to apply for one of our non-UK partner universities we will also take you through their application process.

## Our UK University Partners



(including Dubai Campus)



## Our Australian University Partners





## Medical Foundation Programme

Our innovative Medical Foundation Programme is designed for students wishing to progress onto medicine, dentistry, pharmacy and other life science undergraduate degrees, including biomedical sciences and pharmacology.

### Programme Content

You will learn how the human body works through the study of anatomy, physiology and biochemistry. You will also be introduced to pathology, microbiology, virology and parasitology, genetics and public health.

### Medical School Requirements

The course has been developed with an understanding of the requirements of medical and dental schools. This includes using problem-based learning where you will develop your medical knowledge by studying specific cases.

### Research Project

Investigations in Biomedicine offers you the opportunity to carry out your own projects using the research skills that are required at university. This will ensure you are fully equipped with the skills and attributes required for degree-level study.

### Interview Practice & Academic English

To progress to medical or dentistry schools you will need to pass an interview. We will prepare you for this with extensive practice and 'mock' interviews. You will also study Academic English to ensure you have required English language skills for your future studies.

### Entry Requirements

Completion of High School in your country with good grades (including Maths & Chemistry & Biology) or 4 relevant IGCSEs at Grade C (4).

An English level equivalent to 6.0 in IELTS.

Please contact us for country-specific academic entry requirements

Pre-sessional English courses are available for students who do not have the required English level.

### Progression to undergraduate study in the following subjects:

- Medicine
- Dentistry
- Pharmacy
- Biomedical Sciences
- Pharmacology
- Physiotherapy
- Chemistry
- Biology
- Biochemistry
- Optometry

### What You Will Study

- Genes, Cells & Development
- Atoms, Molecules & Reactions
- Measurements in Life Sciences
- Medicine, Disease & Society
- Tissues, Systems & Regulation
- Periodic & Organic Chemistry
- Investigations in Biomedicine
- Academic English

### Fees and Start Dates

London: GBP 18,000  
Abu Dhabi: USD 22,050  
Online: GBP 18,000

Note: Fees are subject to change

**Start Dates:** September & January

**Course Length:** One Academic Year

For availability & fees at partner teaching centres please contact us at [info@intfoundationgroup.co.uk](mailto:info@intfoundationgroup.co.uk)

## Your Medical Pathway

### Our Medical University Partners

Progression from our Medical Foundation Programme is different to our other four Foundation Programmes. This is because we have separate progression agreements in place with medical schools in the UK and around the world.

#### UK



(progression to pre-med programme)

#### Rest of the world



### Medical School Interviews

To progress to medical or dentistry schools you will need to first pass a virtual interview. All IFG Medical Foundation students get one-to-one and group practice to help them prepare for the two types of interview.

#### Panel Interviews

You will be interviewed by a panel of medical school lecturers. They will assess your motivation to study medicine or dentistry plus test your understanding of basic medical practice and ethics.

#### Multiple Mini Interviews (MMIs)

MMIs consist of a series of mini-interviews focused on task-based scenarios intended to judge your suitability as a doctor and test your analytical skills and medical judgement.





# IFG Pre-masters & Postgraduate Diploma Programmes



## Pre-Masters in Business Management

Includes a Diploma in Business Management, Leadership and Innovation accredited at Level 6 by Quali, an Ofqual awarding body.

### The Programme

Our contemporary course can be taken as a self-standing qualification with an award of 120 credits at Level 6 (equivalent to the final year of an undergraduate degree) as well as providing a progression route to full masters programmes at leading UK universities.

### Main Modules

Leadership in a Changing World  
Introduction to Contemporary Business  
Strategy: Sustainable Business Growth  
Finance for Strategic Decision Makers  
Leadership and Management in Multicultural Contexts  
Creating Futures: Sustainable Enterprise and Innovation  
Sustainable Risk Management

### Entry Requirements

First degree in any subject.

Candidates with considerable experience but no formal qualifications may be considered, subject to interview.

English level equivalent to IELTS 6.0.

### Progression to the following postgraduate degrees:

**University of Derby Business School**  
MSc International Business plus pathways HRM, Marketing, Finance.  
MSc Marketing Management.

### Aston University

- MSc Business & Management
- MSc Human Resource Management
- MSc Strategic Marketing
- MSc Sustainable Business Operations

Progression to other universities possible on a case-by-case basis.

### Fees and Start Dates

London: GBP 14,000

Abu Dhabi: USD 16,600

Online: GBP 10,500

Note: Fees are subject to change

**Start Dates:** September & January

**Course Length:** 6 months

For availability & fees at partner teaching centres please contact us at [info@intfoundationgroup.co.uk](mailto:info@intfoundationgroup.co.uk)



## Postgraduate Diploma in Business & Management

A fast-track, value for money route to an MBA.

### The Programme

Our 120 credit programme meets the entry requirements of the University of Gloucestershire for the final part of its MBA. It takes you two thirds of the way to a full Gloucestershire MBA and students need only complete the final 60 credits with a dissertation, which can be achieved in 3 months, either at the university or online.

### Mandatory Modules

Strategic Management and Leadership  
 People in Organisations  
 Strategic Marketing Management  
 Entrepreneurship  
 Financial Management  
 Business Research Methods

### Elective Modules

Risk Management  
 Project Management  
 Human Resource Management  
 Sustainability & Ethical Leadership

### Entry Requirements

First degree in any subject.

Candidates with HE level diplomas and appropriate work experience may be considered, subject to interview.

English level equivalent to IELTS 6.0.

### Progression to postgraduate study

Our Postgraduate Diploma in Business & management leads to the final part of an MBA from the University of Gloucestershire.

Alternatively, students can progress to full masters courses at a range of other UK universities.

### Fees and Start Dates

London: GBP 9,000

Abu Dhabi: USD 9,000

Online: GBP 6,750

Note: Fees are subject to change

Start Dates: September, January & July

Course Length: 6 months

For availability & fees at partner teaching centres please contact us at [info@intfoundationgroup.co.uk](mailto:info@intfoundationgroup.co.uk)

## Pre-Masters in Law

A 6-month course focusing on UK law and legal system.

### The Programme

A strong emphasis on developing the learning and research skills required for studying law at postgraduate level in the UK. Our teaching encourages students to evaluate, analyse, and apply information, and to appreciate the relationship between theories and concepts and the real world of legal practice.

### English Skills Modules

Legal English  
 Communication Skills  
 Research Skills  
 Academic English

### Academic Modules

The English Legal System  
 Contract law  
 Tort law  
 Criminal law

### Progression to postgraduate study

Designed for graduates wanting to progress onto an LLM or other law-related master's degree in the UK.

You will be given one-to-one assistance in choosing and applying to law related masters courses at UK universities.

### Entry Requirements

First degree in any subject.

Candidates with considerable experience but no formal qualifications may be considered, subject to interview.

English level equivalent to IELTS 5.5 (with a minimum of 5.0 in reading & writing).

### Fees and Start Dates

London: GBP 9,000

Abu Dhabi: USD 10,675

Online: GBP 6,750

Note: Fees are subject to change

Start Dates: September & January

Course Length: 6 months

For availability & fees at partner teaching centres please contact us at [info@intfoundationgroup.co.uk](mailto:info@intfoundationgroup.co.uk)





## Pre-Sessional for Postgraduate Studies

A three-month course focusing on the academic English skills required for postgraduate study in an English-speaking country.

### *The Programme*

Our short three-month Pre-sessional for Postgraduate Studies programme is designed for students who have completed their first degree and meet the academic English requirements for postgraduate study but need to improve their academic English and study skills.

### *Topics covered include*

- Structuring academic reports and essays
- Quantitative and qualitative research skills
- Avoiding plagiarism
- Constructing and delivering academic presentations
- Interview and negotiation skills
- Interpreting tables and graphs
- Identifying key information and arguments

### *Progression to postgraduate study*

You will get professional one-to-one advice on university and master course options plus guidance with your application.

### *Fees and Start Dates*

London: GBP 4,000

Abu Dhabi: USD 4,000

Online: GBP 3,000

Note: Fees are subject to change

**Start Dates:** September, January, April & July

**Course Length:** 3 months

For availability & fees at partner teaching centres please contact us at [info@intfoundationgroup.co.uk](mailto:info@intfoundationgroup.co.uk)

### *Entry Requirements*

A good first degree in any subject that meets the entry requirements of the masters course(s) you want to apply for English level equivalent to IELTS 5.5 (with a minimum of 5.0 in reading & writing).







# Other IFG Pathway Programmes



## Other Pathway Programmes

### Diploma & Advanced Diploma in Business Management

Accredited by ATHE, an Ofqual approved awarding body

The Diploma and Advanced Diploma are two separate courses that are recognised as being equivalent to the first two years of a UK three-year business degree.

Both courses can be completed in fifteen months and so offer a fast track towards a full UK undergraduate business degree.

On completion, of the Advanced Diploma you can progress to the final year of a business-related degree course at over 20 ATHE partner universities in the UK, Australia and Canada including Sunderland, Leeds Trinity, Ulster, Bolton, Westminster and Portsmouth. See <https://athe.co.uk/progression-routes/> for more information.

For more details, start dates and fees please contact us directly.

### Pre-Phd Programme

Applying for a PhD course can be a confusing and daunting process. Our three-month course will help to identify a research topic and develop a research proposal which is right for you, and take you step by step through the University's application process.

It will equip you with the academic and research skills that are required to successfully gain a place at a UK university and to embark on your research studies with confidence.

The course consists of a series of workshops together with one-to-one sessions. Our tutors have many years of experience in helping students at this level of study and understand exactly what is required for a successful application.

For more details, start dates and fees please contact us directly.

### Pre-DBA Programme

DBA programmes are becoming an increasingly attractive way in which to advance qualifications and enhance professional development. However, the application process is more difficult and confusing than for other degree courses. Our Pre-DBA programme, completed over four weeks, helps to take students step-by-step through the process as well as developing the research skills that students need for their DBA.

For more details, start dates and fees please contact us directly.



## English Language Courses

### General English & One-to-One Tuition

Our General English classes are suitable for students from beginner to advanced and are available for two weeks to one academic year. There are many different reasons why you may want to improve your English language skills – future study plans, to advance your career or simply to improve your conversation skills. Whatever the reason, our small experienced and dynamic teachers will help you progress quickly and ensure you enjoy the learning experience.

One-to-one lessons are an alternative or as a supplement to our regular courses. Teaching sessions are tailored to your specific needs and can cover a wide range of topics including:

- Exam preparation
- English for specific purposes such as Business, Law, Tourism and Medicine
- Interview preparation
- Developing an academic or business proposal
- Presentation skills
- Business communication

### Pre-sessional English

Our Foundation and Pre-Masters programmes include modules to improve the English language and study skills you need for university. However, for students who do not quite meet our English language entry requirements or want to increase their confidence before starting their main programme, we offer pre-sessional programmes for 8 or 12 weeks.

### Occupational English Test (OET) Preparation

The Occupational English Test (OET) is accepted in a range of countries including the UK, Australia, and New Zealand as a test of English skills for international healthcare professionals.

Our course will familiarise you with the test format and content and gives you a thorough understanding of the structure of each test area, exploring the skills, techniques and professional language required for success.

IFG offers students the flexibility to study either two-week full-time or four-week part-time. Both courses are appropriate for students with a C1 or high B2 level of English. Students with a lower level can prepare for this course by taking an IFG General English course.

*For more details, start dates and fees please contact us directly or refer to our English Language Course brochure*



English Language  
Preparation  
at IFG

# Your Accommodation

## Student Accommodation in London

IFG London can advise and recommend organisations that help arrange your accommodation before you arrive.

**Student Halls of Residence:** We provide you with a choice of self-contained studios and single ensuite rooms where you share the kitchen and sitting room with about five or six other students.

**Homestay Accommodation:** An alternative to student halls is homestay accommodation where you live with a family. Usually, the family will provide your breakfast and evening meal and do your washing.

**Private Shared Apartments:** Another option is to book accommodation in a private apartment, either on your own or sharing with other students.

## Student Accommodation in Abu Dhabi

IFG Abu Dhabi can arrange accommodation at Vision Tower 1, an apartment complex that is a 5-minute walk from the campus.

- Furnished apartments with washing machines & fully equipped kitchens
- Cleaning services are provided twice a week
- Free on-site gym & swimming pool
- Lounge area
- 24/7 security camera and concierge services
- Shops, including Supermarkets, within a 1–5-minute walk
- Minimum age 16

*For details of accommodation at our partner teaching centres please contact the individual centre directly*



Accommodation is an important part of the study abroad experience and so at IFG we want you to feel at home in your new surroundings.



## Togetherall Student Support

### Get Support. Take Control. Feel Better

Moving abroad to study for the first time is an exciting time with lots of new challenges and experiences ahead. However, for some it can also initially be a stressful time as well.

At IFG we understand this and take the mental health of our students very seriously and so are always available to listen, advise and help. However, we have also partnered with Togetherall, a company dedicated to offering professional and anonymous, mental health advice.

### How Togetherall Can Help

Togetherall offers a completely anonymous 24/7, 365 days a year online help service for anyone who wants to talk to a trained mental health advisor or share their problems with other people in similar situations. The service is free to all IFG students and the support is ongoing for as long as you need it.

The Togetherall website also offers members a range of different self-help courses including in areas such as self-awareness and building your assertiveness. So, whether you're dealing with a mental health issue or just feel burdened by everyday worries or concerns, Togetherall provides safe, anonymous online support 24/7. Please check [www.Togetherall.com](http://www.Togetherall.com) for further details.

### How to Join Togetherall

When you start at IFG simply go to [www.Togetherall.com](http://www.Togetherall.com) and create an account using your IFG email. Remember this is completely anonymous and no one will be aware that you have signed up. We really hope that you won't ever need to use Togetherall's services but it is always good to know they are there if you need them.

## What Our Students Say

### Jiahui Cong from China – Pre-Masters in Business Management in London, UK

"I am so happy to share my study experience with classmates and teachers at IFG. At the beginning of the study, I was really bad at English and too shy to express and share my thoughts. Our teachers are so kind that they always encourage us to express ourselves and they are delighted to listen to our troubles and give us some advice.

I have made a lot of friends in the past six months, and they are so friendly and cute. Whenever I was frustrated and not confident, they gave me encouragement. In terms of the application for my master program, Michael gave me a lot of help. It was a happy and unforgettable experience that I spent half a year with IFG in London and have learned a lot of knowledge, which has not been covered before. I am also honoured to meet friends and kind teachers."

### Toni Megally from Egypt – Medical Foundation in Abu Dhabi, UAE

"The year I spent at IFG was simply priceless. From a syllabus that is more aligned with what is taught in university to the approachable teachers who not only taught with detail but also offered valuable advice about the future. In addition to this, IFG also offered a plethora of progression options to universities all over the world, making you feel spoiled for choice. IFG has definitely allowed me to have a better idea of what university life has to offer and has left me feeling more prepared for it."

### Hasan Ghazalah from Iraq – Medical Foundation in Baghdad, Iraq

"As an Iraqi student, my journey at IFG's Medical Foundation Programme, taught in Baghdad, Iraq, was an exciting transition from high school to university life. The support from IFG in applying to universities was invaluable. They conducted several practice sessions which prepared me well for the Royal College of Surgeons in Ireland (RCSI) interview.

The outcome? A five-year medicine offer from RCSI. Furthermore, IFG aided in finding suitable accommodation and easing my relocation to a new country. All in all, my time at IFG was transformative, laying the groundwork for my future in the medical profession. My next step is RCSI in Ireland, a journey I look forward to with eagerness and gratitude towards IFG for equipping me for this path."

### Agigi (Man-Hsuan Shih) from Taiwan – Business Management Foundation in London, UK

"Everyone has been so friendly, helping me with the application process and giving guidance at each stage of applying to university. Teachers have also been really helpful, explaining topics clearly and making us understand the assessment tasks.

Finally, I would like to take this opportunity to thank Michael who has taken overall care of us. He is a most honest person, always telling us the truth. He also keeps a close eye on us, reminding us what we have to do and leading us on the right path towards to a good university.

Thank you, Michael! Thank you, IFG!"

## IFG Franchise Network



IFG also works with a network of partner colleges worldwide who offer our courses to students in their own country – if you want to study your IFG programme in one of these countries please contact us for further details of go to [www.intfoundationgroup.co.uk](http://www.intfoundationgroup.co.uk)

## Our Accreditations



IFG London is accredited by the Accreditation Service for International Colleges (ASIC).  
[www.asic.org.uk](http://www.asic.org.uk)



IFG London is an accredited exam centre for Trinity College London English language exams  
[www.trinitycollege.com](http://www.trinitycollege.com)

## Language Cert

IFG London is a partner college for LanguageCert online exams  
[www.languagecert.org](http://www.languagecert.org)



The IFG Medical Foundation is accredited by NCFE, an Ofqual authorised awarding body  
[www.ncfe.org.uk](http://www.ncfe.org.uk)



The IFG Pre-Masters in Business Management Includes a Diploma in Business Management, Leadership and Innovation accredited at Level 6 by Qualifi, an Ofqual awarding body  
[www.qualifi.net](http://www.qualifi.net)



IFG Business Management, Engineering, Computer Science & Social Sciences Foundations are endorsed by ATHE, an Ofqual authorised awarding body  
[www.athe.co.uk](http://www.athe.co.uk)

## Follow Us on Social Media



<https://www.instagram.com/intfoundation/>



<https://twitter.com/intfoundationgp/>



<https://www.youtube.com/@internationalfoundationgroup/videos>



<https://www.tiktok.com/@intfoundationgroup>



<https://www.facebook.com/InternationalFoundationGroup>



<https://www.linkedin.com/company/international-foundation-group-ifg->





**INTERNATIONAL  
FOUNDATION GROUP**

## IFG Mission Statement

“Our mission is to help students fulfil their academic dreams by providing pathways to university level study and beyond”



+44 (0) 203 633 0510



[www.intfoundationgroup.co.uk](http://www.intfoundationgroup.co.uk)



[info@intfoundationgroup.co.uk](mailto:info@intfoundationgroup.co.uk)



11-13 Mandeville Place  
London W1U 3AJ - United Kingdom